

Component
LED



**INVISIBLE LED
PLUG-IN LED**

- Infrared detection
- Direction sensing
- Ultraviolet disinfection
- Water / Surface / Air Sterilization



光鼎電子股份有限公司

PARA LIGHT ELECTRONICS CO., LTD

11F, No. 8, Jiankang Rd., Zhonghe Dist., New Taipei City 23586, Taiwan



INNOVATE
COOPERATION
INTEGRITY
EVELOPMENT

Chairman Mr. David Ma
Capital USD 37 million
No. of Employee 676

OUR HISTORY

PARA LIGHT was founded in 1987, and listed on Taiwan Stock Exchange (TWSE) in 2008 (ticker number 6226).

PARA LIGHT is now one of the global leaders in LED Design and Manufacturing. 9 years ago, PARA LIGHT established the first OPTICAL LAB, by which PARA LIGHT is able to provide Optical Solutions, and also expands our services to LED MODULE Design and Manufacturing.

PARA LIGHT's manufacturing facilities are located in China (Nanjing and Lianyungan), and Myanmar (Yangon), certified with ISO 14001, ISO 9001, and IATF 16949. PARA LIGHT produces high quality products complied to REACH and RoHS standard.

Sales offices are based in Taiwan, China, USA and India. Our sales team and certified distributors are located around the world to provide immediate services and prompt delivery to the customers.

Adhering to the enterprise philosophy of "customer first, service quality, creativity reality, skillfulness technique has always been the mission statement at the Para Light Electronics.

CATALOG

Infrared LED and Detector

Lamp Series	07
SMD Series	13
Side View Series	16
High Power Series	17
Photo Diode Series	18
Photo Transistor Series	19

Sensor

Sensor Series	23
---------------	----

Optical Switch

Photointerrupter ITR (Transmissive Type)	27
Photointerrupter ITR (Reflective Type)	30
IRM Series	35

CATALOG

UV LED

UV LED	39
--------	----

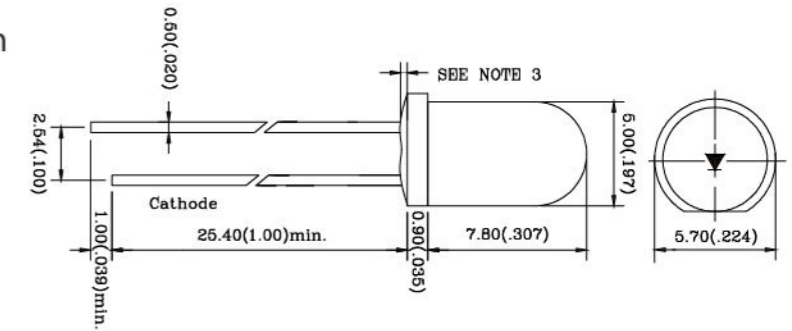


INFRARED LED & DETECTOR

Applications

- ◆ Infrared detection
- ◆ Direction sensing
- ◆ Ultraviolet disinfection
- ◆ Water / Surface / Air Sterilization

L51XXIR1X Dimension 5 mm



Specifications

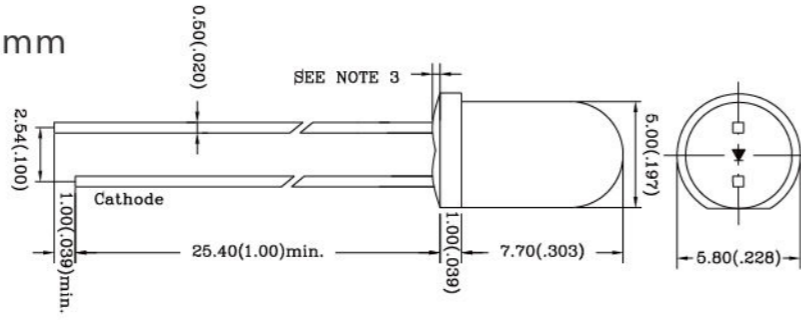
Part No.	Wavelength λ_d (nm)	Viewing Angle (deg.)	Radiation Intensity I_e (mW/sr)		Typ. Forward Voltage V_f (V)	Forward Current I_f (mA)
			Min.	Typ.		
L514EIR1C	940 nm	20	15	28	1.2@ $I_f=20$ mA 1.5@ $I_f=100$ mA	20
L516EIR1C		30	8	22	1.3@ $I_f=20$ mA 1.5@ $I_f=100$ mA	
L518EIR1C		40	4	12	1.2@ $I_f=20$ mA 1.5@ $I_f=100$ mA	
L51CEIR1C		60	4	8	1.2@ $I_f=20$ mA 1.4@ $I_f=100$ mA	
L514EIR1BC		20	15	30	1.3@ $I_f=20$ mA 1.5@ $I_f=100$ mA	
L516EIR1BC		30	10	20	1.2@ $I_f=20$ mA 1.5@ $I_f=100$ mA	
L518EIR1BC		40	8	18	1.3@ $I_f=20$ mA 1.5@ $I_f=100$ mA	
L51AEIR1BC		50	4	12	1.3@ $I_f=20$ mA 1.5@ $I_f=100$ mA	

L51XXIR3X Dimension 5 mm

Part No.	Wavelength λ_d (nm)	Viewing Angle (deg.)	Radiation Intensity I_e (mW/sr)		Typ. Forward Voltage V_f (V)	Forward Current I_f (mA)
			Min.	Typ.		
514EIR3C	865 nm	20	30	50	1.4@ $I_f=20$ mA 1.6@ $I_f=100$ mA	20
L516EIR3C		30	12	30		
L518EIR3C		40	10	22		
L51AEIR3C		50	10	20		
L514EIR3BC		20	25	45		
L516EIR3BC		30	12	25		
L518EIR3BC		40	10	20		
L51AEIR3BC		50	10	18		



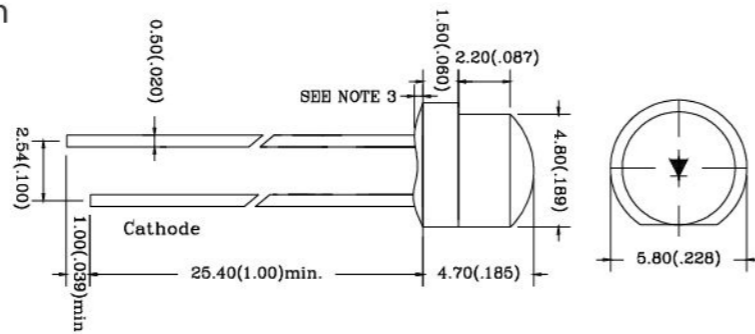
L51XGIR4XX Dimension 5 mm



Specifications

Part No.	Wavelength λ_d (nm)	Viewing Angle (deg.)	Radiation Intensity I_e (mW/sr)		Typ. Forward Voltage V_f (V)	Forward Current I_f (mA)
			Min.	Typ.		
L514GIR4C	850 nm	20	110	160	1.4@ $I_f=20$ mA 1.5@ $I_f=100$ mA	100
L516GIR4C		30	30	70	1.5@ $I_f=20$ mA 1.6@ $I_f=100$ mA	
L518GIR4C		40	68	85	1.4@ $I_f=20$ mA 1.5@ $I_f=100$ mA	
L51AGIR4C		50	24	40		

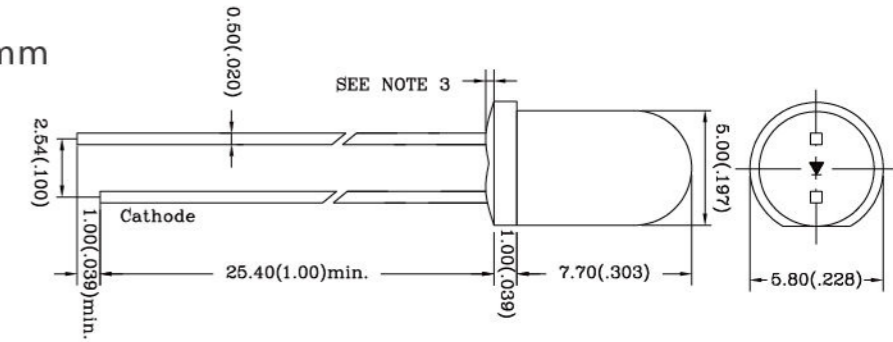
L5PGEIRXX Dimension 5 mm



Specifications

Part No.	Wavelength λ_d (nm)	Viewing Angle (deg.)	Radiation Intensity I_e (mW/sr)		Typ. Forward Voltage V_f (V)	Forward Current I_f (mA)
			Min.	Typ.		
L5PGEIR4C	850 nm	55	4	8	1.2	20
L5PGEIR1C	940 nm	80	2	4		

L51XXIR2X Dimension 5 mm



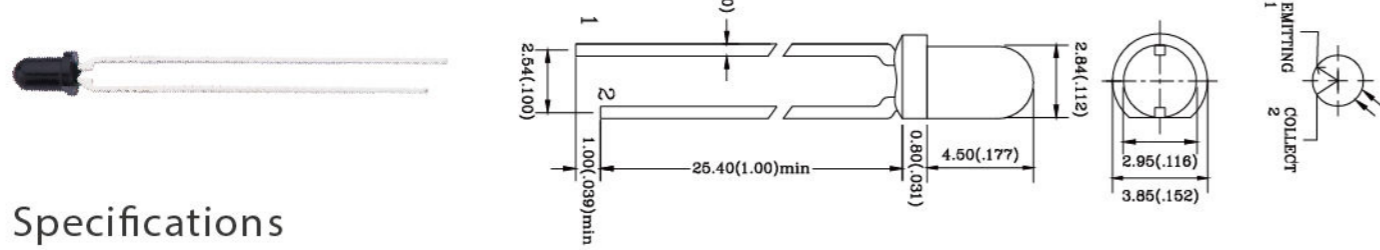
Specifications

Part No.	Wavelength λ_d (nm)	Viewing Angle (deg.)	Radiation Intensity I_e (mW/sr)		Typ. Forward Voltage V_f (V)	Forward Current I_f (mA)
			Min.	Typ.		
L514EIR2C	880 nm	20	12	28	1.3@ $I_f=20$ mA 1.6@ $I_f=100$ mA	20
L516EIR2C		30	2	7		
L518EIR2C		40	20	21		
L51AEIR2C		50	4	10		
L514EIR2BC		20	15	30		

L51XXIR4X Dimension 5 mm

Part No.	Wavelength λ_d (nm)	Viewing Angle (deg.)	Radiation Intensity I_e (mW/sr)		Typ. Forward Voltage V_f (V)	Forward Current I_f (mA)
			Min.	Typ.		
L514EIR4C	850 nm	20	25	45	1.6@ $I_f=20$ mA 1.7@ $I_f=100$ mA	20
L516EIR4C		30	21	33	1.6@ $I_f=20$ mA 1.7@ $I_f=100$ mA	
L518EIR4C		40	10	20	1.4@ $I_f=20$ mA 1.5@ $I_f=100$ mA	
L51AEIR4C		50	12	25	1.6@ $I_f=20$ mA 1.7@ $I_f=100$ mA	
L51CEIR4C		60	10	20	1.4@ $I_f=20$ mA 1.6@ $I_f=100$ mA	
L514EIR4BC		20	56	65	1.4@ $I_f=20$ mA 1.5@ $I_f=100$ mA	
L516EIR4BC		30	32	40		
L518EIR4BC		40	28	35		
L51AEIR4BC		50	10	25		

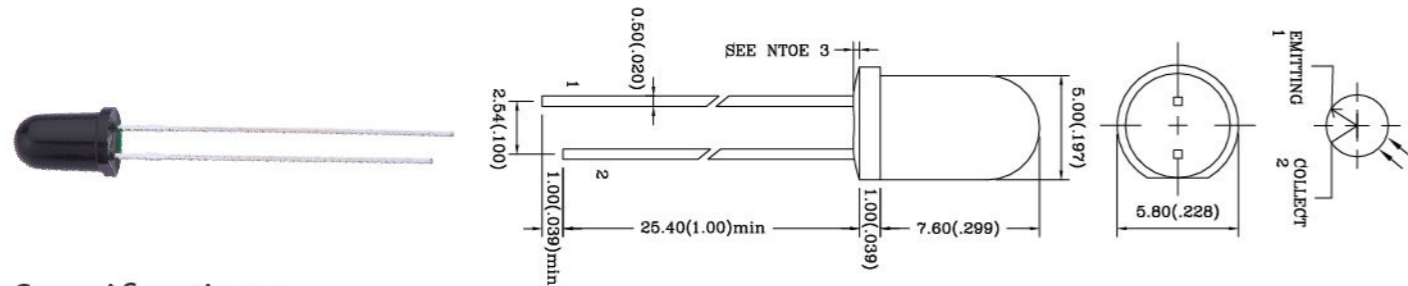
L31ROPT1X Dimension 3 mm



Specifications

Part No.	Min. Collector-Emitter Breakdown Voltage $BV_{CEO}(V)$ @ $I_C=100\mu A$; $E_e=0 \text{ mW/cm}^2$	Min. Emitter-Collector Breakdown Voltage $BV_{ECO}(V)$ @ $I_C=100\mu A$; $E_e=0 \text{ mW/cm}^2$	Max. Collector Dark Current $I_{CEO}(nA)$ @ $V_{CE}=10V$; $E_e=0 \text{ mW/cm}^2$	Max. Collector-Emitter Saturation Voltage $V_{CE(S)}(V)$ @ $I_C=2mA$; $E_e=0.5 \text{ mW/cm}^2$	Typ. On State Collector Current $I_C(mA)$ @ $V_{CE}=5V$; $E_e=0.1 \text{ mW/cm}^2$	Spectral Sensitivity Wavelength $\lambda_p(nm)$		
						Min.	Typ.	Max.
L31ROPT1C					4	400		1050
L31ROPT1D1	30	5	100	0.4	1.2	900	940	
L31ROPT1D2					2	800	870	

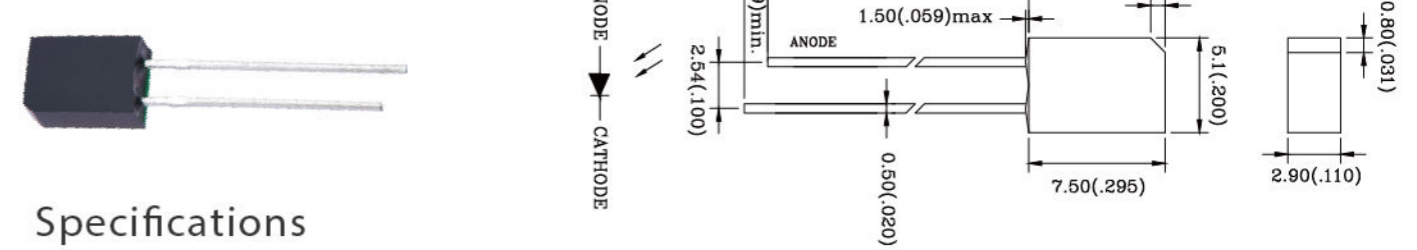
L51ROPT1X Dimension 5 mm



Specifications

Part No.	Min. Collector-Emitter Breakdown Voltage $BV_{CEO}(V)$ @ $I_C=100\mu A$; $E_e=0 \text{ mW/cm}^2$	Min. Emitter-Collector Breakdown Voltage $BV_{ECO}(V)$ @ $I_C=100\mu A$; $E_e=0 \text{ mW/cm}^2$	Max. Collector Dark Current $I_{CEO}(nA)$ @ $V_{CE}=10V$; $E_e=0 \text{ mW/cm}^2$	Max. Collector-Emitter Saturation Voltage $V_{CE(S)}(V)$ @ $I_C=2mA$; $E_e=0.5 \text{ mW/cm}^2$	Typ. On State Collector Current $I_C(mA)$ @ $V_{CE}=5V$; $E_e=0.1 \text{ mW/cm}^2$	Spectral Sensitivity Wavelength $\lambda_p(nm)$		
						Min.	Typ.	Max.
L51ROPT1C					4	400		1050
L51ROPT1D1	30	5	100	0.4	1.2	900	940	
L51ROPT1D2					1.2	800	870	

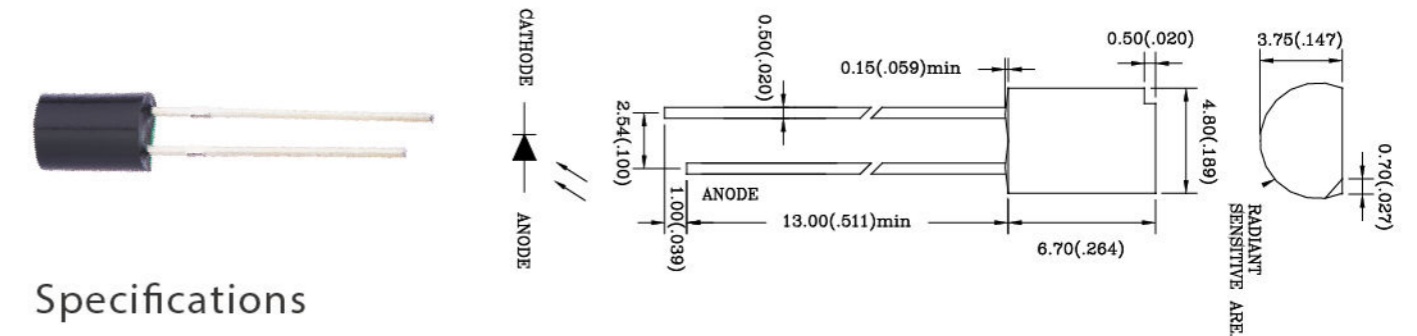
LSB1R9PD1X Dimension 5 mm



Specifications

Part No.	Max. Reverse Dark Current $I_D(nA)$ @ $V_R=10V$; $E_e=0 \text{ mW/cm}^2$	Min. Reverse Voltage $V(BR)R(V)$ @ $I_R=100\mu A$; $E_e=0 \text{ mW/cm}^2$	Typ. Open Circuit Voltage $V_{OC}(V)$ @ $E_e=5 \text{ mW/cm}^2$	Typ. Light Current $I_L(\mu A)$ @ $V_R=5V$; $E_e=5 \text{ mW/cm}^2$	Total Capacitance $C_T(PF)$ @ $f=1 \text{ mHz}$; $V_R=5V$; $E_e=0 \text{ mW/cm}^2$	Spectral Sensitivity Wavelength $\lambda_p(nm)$		
						Min.	Typ.	Max.
LSB1R9PD1C						400		1050
LSB1R9PD1D1	30	33	390	40	18	900	940	
LSB1R9PD1D2						800	870	

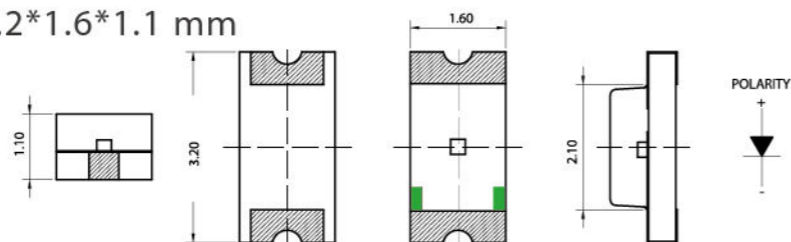
LSC1R9PD1X Dimension 5 mm



Specifications

Part No.	Max. Reverse Dark Current $I_D(nA)$ @ $V_R=10V$; $E_e=0 \text{ mW/cm}^2$	Min. Reverse Voltage $V(BR)R(V)$ @ $I_R=100\mu A$; $E_e=0 \text{ mW/cm}^2$	Typ. Open Circuit Voltage $V_{OC}(V)$ @ $E_e=5 \text{ mW/cm}^2$	Typ. Light Current $I_L(\mu A)$ @ $V_R=5V$; $E_e=5 \text{ mW/cm}^2$	Total Capacitance $C_T(PF)$ @ $f=1 \text{ mHz}$; $V_R=5V$; $E_e=0 \text{ mW/cm}^2$	Spectral Sensitivity Wavelength $\lambda_p(nm)$		
						Min.	Typ.	Max.
LSC1R9PD1C						400		1050
LSC1R9PD1D1	30	33	390	40	18	900	940	
LSC1R9PD1D2						800	870	

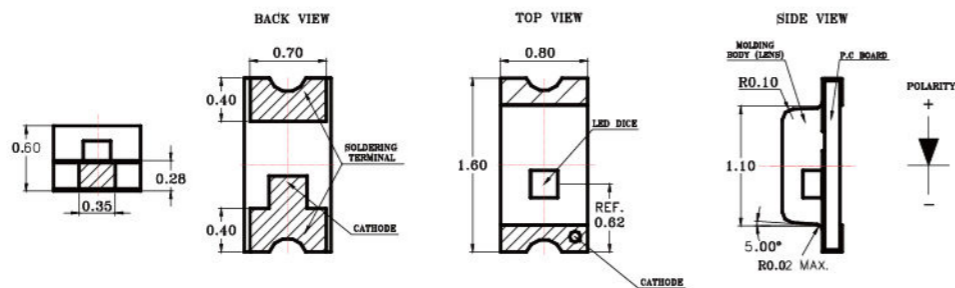
LC150IR1CT Dimension 3.2*1.6*1.1 mm



Specifications

Part No.	Wavelength λ_d (nm)	Forward Current I_F (mA)	Radiant Intensity I_e (mW/sr)		Typ. Forward Voltage V_F (V)	Viewing Angle(°)
			Min.	Typ.		
LC150IR1CT	940 nm	20	0.45	1.2	1.4@ $I_F=20$ mA 1.6@ $I_F=100$ mA	130

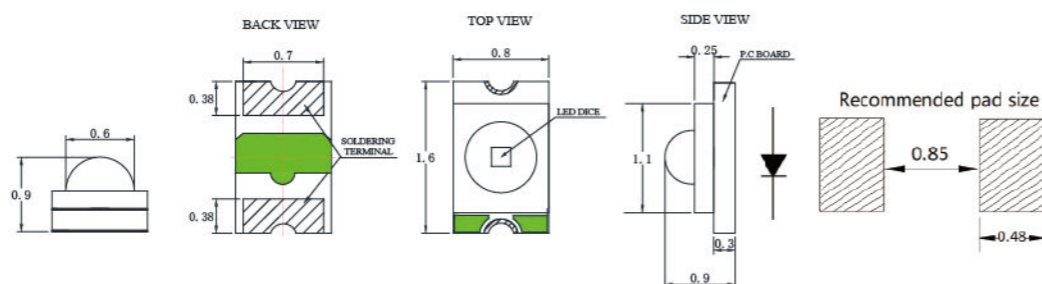
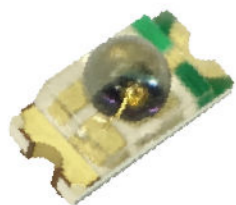
LC191 Dimension 1.6*0.8*0.6 mm



Specifications

Part No.	Package	Reverse Light Current (IL)	Wavelength(nm)	Current amplification factor hFE	
				Min.	Max.
LC191IR1CT	SMD	10	940 nm	1100	1800

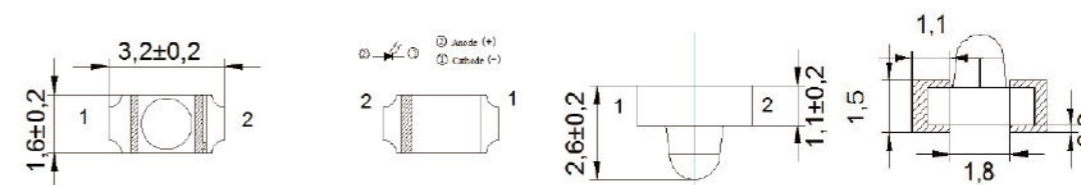
LC19D Dimension 1.6*0.8*0.9 mm



Specifications

Part No.	Package	Reverse Light Current (IL)	Wavelength(nm)	Viewing Angle(°)
LC19DCAIR1CT-XG	SMD	3	940 nm	60

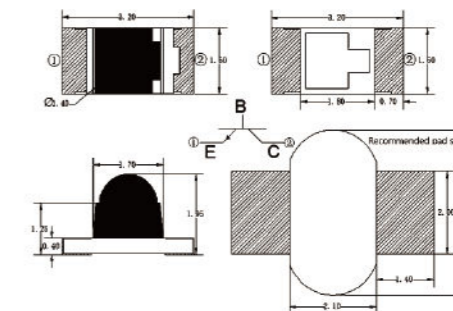
LS156 Dimension 3.2*1.6*2.6 mm



Specifications

Part No.	Package	Reverse Light Current (IL)	Wavelength(nm)	Viewing Angle(°)
LS156AIR1C-HD	SMD	10	940 nm	30

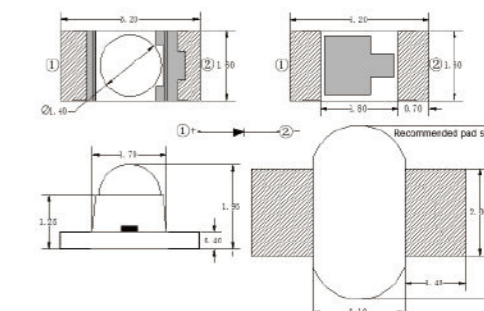
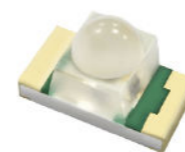
LC15D Dimension 3.2*1.6*1.95 mm



Specifications

Part No.	Wavelength λ_p (nm)	Forward Current I_F (mA)	Power consumption	Current amplification factor hFE	
				Min.	Max.
LC15D4PTDT	940 nm	20	75 mW	1100	1800

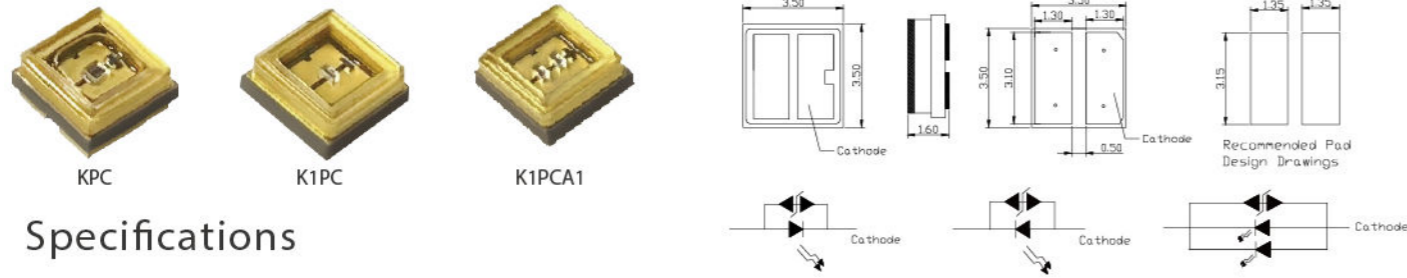
LC15D (IR) Dimension 3.2*1.6*1.95 mm



Specifications

Part No.	Wavelength λ_p (nm)	Forward Current I_F (mA)	Power consumption	Typ. Forward Voltage V_F (V)	Viewing Angle(°)
LC15D4EIR1CT	940 nm	100	160 mW	1.35	20
LC15DSRCT		30	70 mW	2.1	30

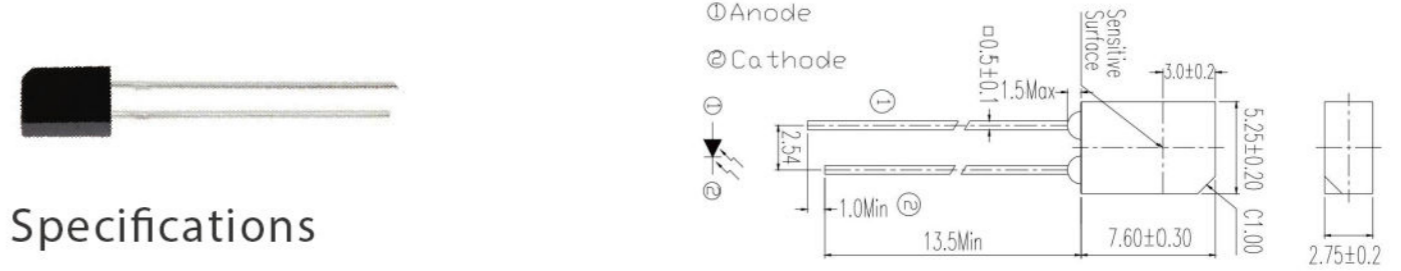
LT3535UVC Dimension 3.5*3.5*1.6 mm



Specifications

Part No.	Package	test condition (IF)	Radiant Intensity(mW)	Wavelength(nm)	Viewing Angle(°)
LT3535UVC-KPC	SMD	80 mA	9.2 mW	275 nm	120
LT3535UVC-K1PC		40 mA	4 mW		
LT3535UVC-K1PCA1		80 mA	8 mW		

LSB1R12PD1D1 Dimension 5 mm



Specifications

Part No.	Package	Reverse Light Current (IL)	Wavelength(nm)	Viewing Angle(°)
LSB1R12PD1D1-ZGY	DIP	25	840 nm ~ 1100 nm	120

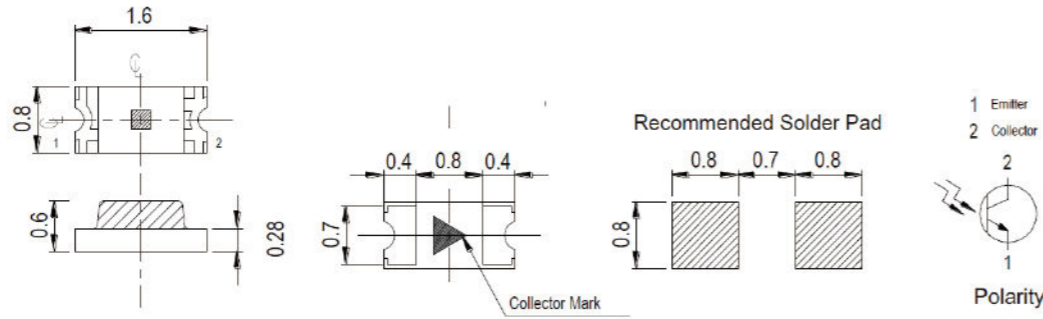
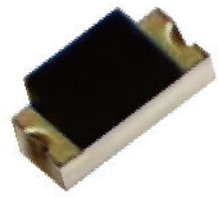
ITR2005002 Dimension 20*13*6 mm



Specifications

Part No.	Package	Reverse Light Current (IL)	Wavelength(nm)	Viewing Angle(°)
LC5042PDC-ZGY	SMD	25	400 nm ~ 1100 nm	120

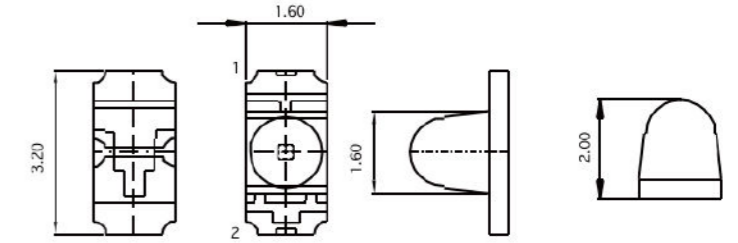
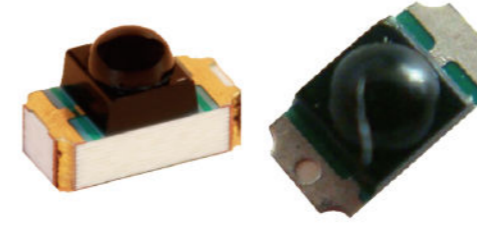
LSC1R9PD1C Dimension 1.6*0.8*0.6 mm



Specifications

Part No.	Min. Collector-Emitter Breakdown Voltage $BV_{CEO}(V)$ @ $I_C=100\mu A$; $E_e=0$ mW/cm ²	Min. Emitter-Collector Breakdown Voltage $BV_{ECO}(V)$ @ $I_E=100\mu A$; $E_e=0$ mW/cm ²	Max. Collector Dark Current $I_{CEO}(nA)$ @ $V_{CE}=20V$; $E_e=0$ mW/cm ²	Max. Collector-Emitter Saturation Voltage $V_{CE(S)}(V)$ @ $I_C=2mA$; $E_e=1$ mW/cm ²	Typ. On State Collector Current $I_C(mA)$ @ $V_{CE}=5V$; $E_e=1$ mW/cm ²	Spectral Sensitivity Wavelength $\lambda_p(nm)$		
						Min.	Typ.	Max.
LC191PTBT-HD	30	5	100	0.4	1.14	940		

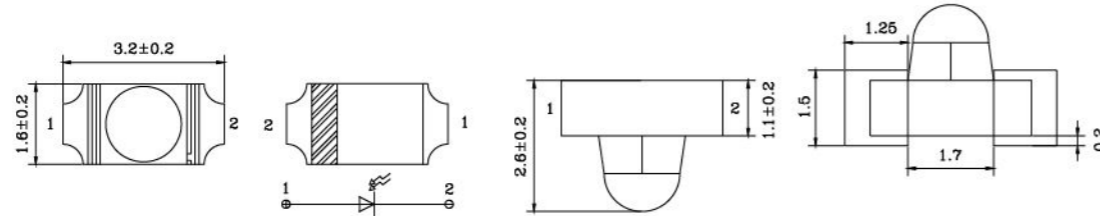
LS153PTDT Dimension 3.2*1.6*2 mm



Specifications

Part No.	Package	Light Current (mA)	Wavelength (nm)	Viewing Angle(°)
LS14GIR4C	SMD	2.6	900 nm ~ 940 nm	30

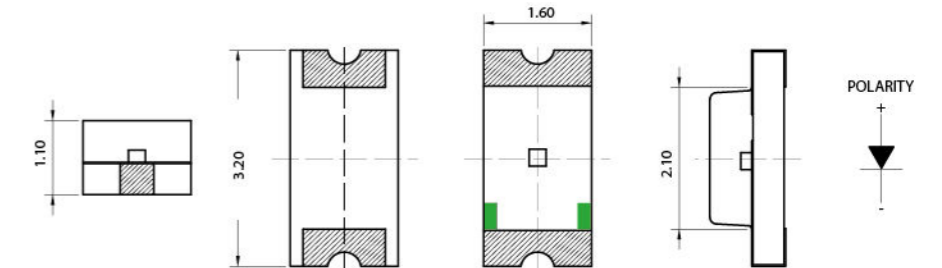
LS153PTDT Dimension 3.2*1.6*2.6 mm



Specifications

Part No.	Min. Collector-Emitter Breakdown Voltage $BV_{CEO}(V)$ @ $I_C=100\mu A$; $E_e=0$ mW/cm ²	Min. Emitter-Collector Breakdown Voltage $BV_{ECO}(V)$ @ $I_E=100\mu A$; $E_e=0$ mW/cm ²	Max. Collector Dark Current $I_{CEO}(nA)$ @ $V_{CE}=10V$; $E_e=0$ mW/cm ²	Max. Collector-Emitter Saturation Voltage $V_{CE(S)}(V)$ @ $I_C=2mA$; $E_e=1$ mW/cm ²	Typ. On State Collector Current $I_C(mA)$ @ $V_{CE}=5V$; $E_e=1$ mW/cm ²	Spectral Sensitivity Wavelength $\lambda_p(nm)$		
						Min.	Typ.	Max.
LS153PTDT-LENS-RB	30	5	30	0.4	1.0	940		

LC150PTDT Dimension 3.2*1.6*1.1 mm



Specifications

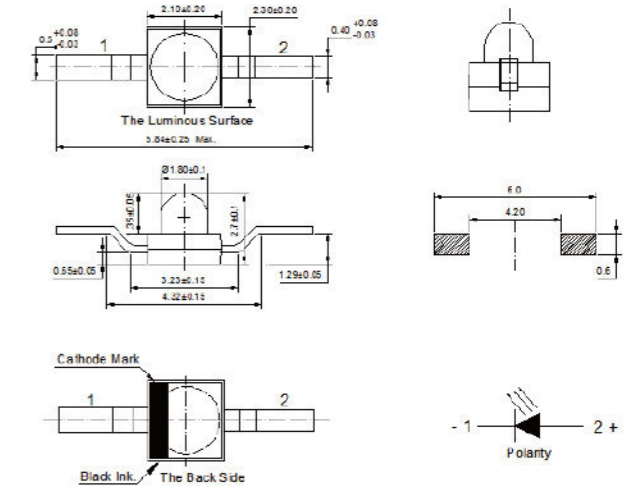
Part No.	Package	Light Current (mA)	Wavelength (nm)	Viewing Angle(°)
LC150PTDT	SMD	2	900 nm ~ 940 nm	120

SENSOR Applications

- ◆ Infrared detection
- ◆ Direction sensing
- ◆ Ultraviolet disinfection
- ◆ Water / Surface / Air Sterilization



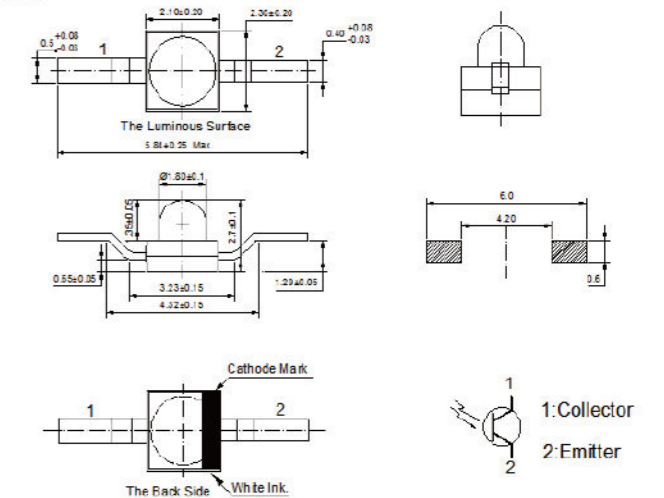
L180IR1C Dimension 5.8*2.1*2.7 mm



Specifications

Part No.	Wavelength λ_d (nm)	Forward Current I_f (mA)	Radiant Intensity I_e (mW/sr)		Typ. Forward Voltage V_f (V)	Viewing Angle(°)
			Min.	Typ.		
L180IR1C-BKS-TR10	940 nm	20	3.0	5.0	1.4@ $I_f=20\text{mA}$ 1.6@ $I_f=100\text{mA}$	25

L180PT1D1 Dimension 3.2*1.6*2.6 mm



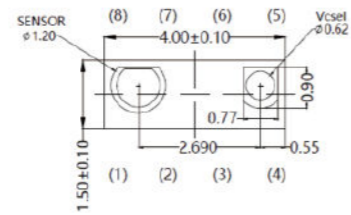
Specifications

Part No.	Package	Light Current (mA)	Wavelength (nm)	Viewing Angle(°)
L180PT1D1-BKR-TR10	SMD	20	730 nm ~ 110 nm	25

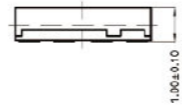
ZSMP4015 Dimension 4.0*1.5*1.0 mm



Top View



Front View



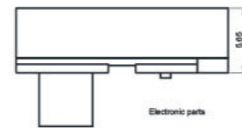
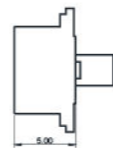
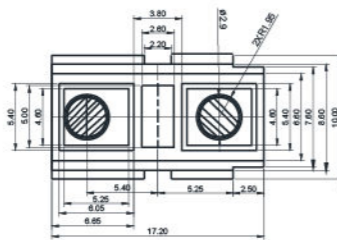
Right Side View



Specifications

Part No.	Package	Function	Interface Compatible	ADC Resolution (bit)	I2C BUS voltage Range (V)
ZSMP4015-S20	4.00*1.50*1.00	ALS+PS	SUBI2C	16	18.5 ~ 5

ZSPSD1710 Dimension 17.2*10.0*5.65 mm



PN1 VOUT
PN2 GND
PN3 Vcc

Electronic parts
General Tolerance(G0.2)

Specifications

Part No.	Package	Function	Ranging range (mm)	Data output	Operating voltage range (V)
PL-ZSPSD1710-S20	17.20*10.00*5.00	DISTANCE MEASURING	15 ~ 150	Analog voltage	4.5 ~ 5.5

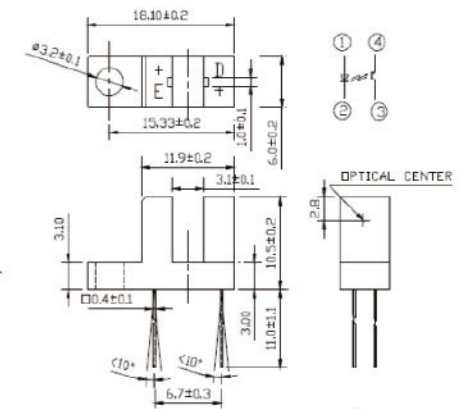
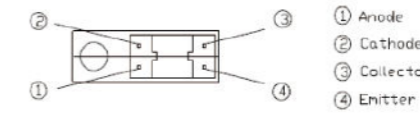
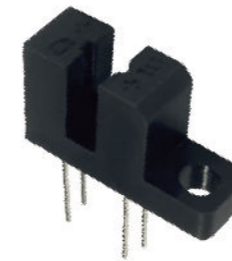


OPTICAL SWITCH Applications

- ◆ Infrared detection
- ◆ Direction sensing
- ◆ Ultraviolet disinfection
- ◆ Water / Surface / Air Sterilization



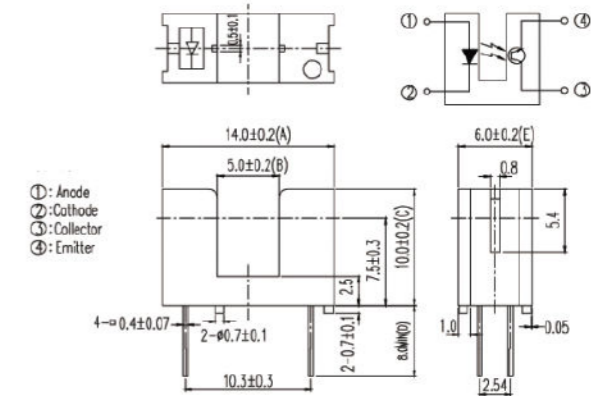
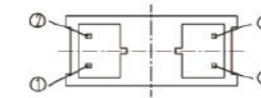
ITRLT8104 Dimension 18.1*6.0*21.5 mm



Specifications

Part No.	Package	Input (Emitter)	Output (Detector)	Tr / Tf (μs)
PA-ITRLT8104	DIP	75 mW	20 mA	15 / 15

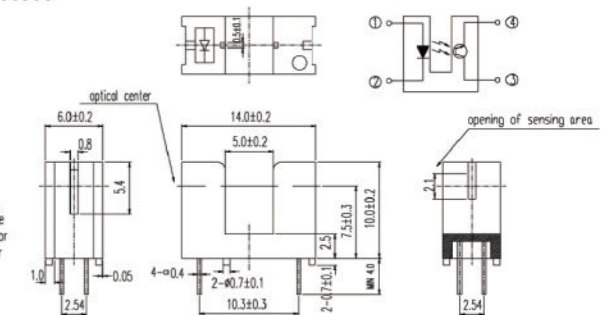
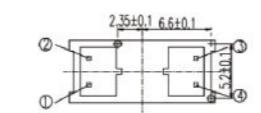
ITRLT9606 Dimension 3.2*2.7*1.4 mm



Specifications

Part No.	Package	Input (Emitter)	Output (Detector)	Tr / Tf (μs)
PA-ITRLT9606	DIP	100 mW	50 mA	15 / 15

ITRLT9606-F Dimension 14.0*6.0*14.0 mm



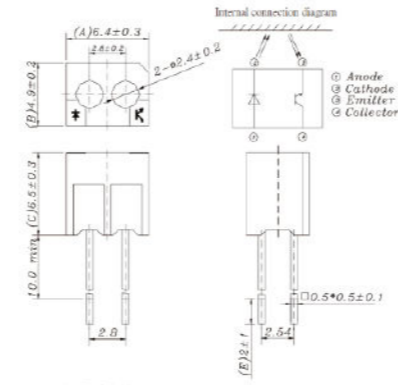
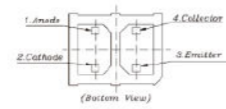
Specifications

Part No.	Package	Input (Emitter)	Output (Detector)	Tr / Tf (μs)
PA-ITRLT9606-F	DIP	75 mW	20 mW	15 / 15

ITRLR20001 Dimension 6.4*4.9*16.5 mm

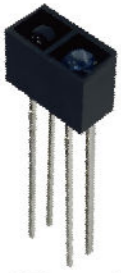


Specifications

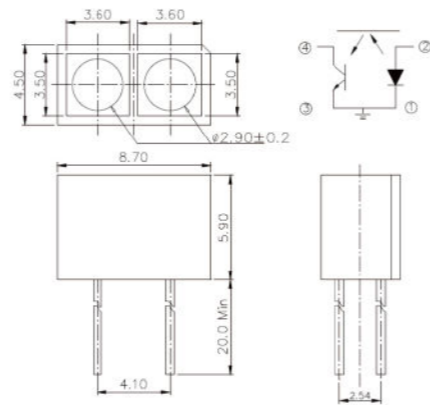
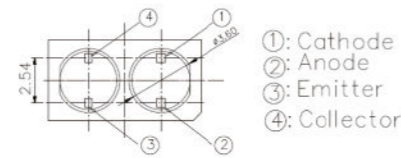


Part No.	Package	Input (Emitter)	Output (Detector)	Tr / Tf (μs)
PA-ITRLR20001	DIP	75 mW	20 mW	25 / 25

ITRLR9909 Dimension 6.4*4.9*16.5 mm



Specifications

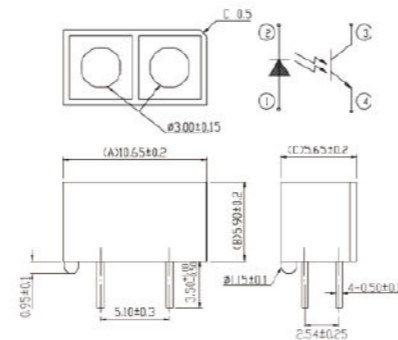
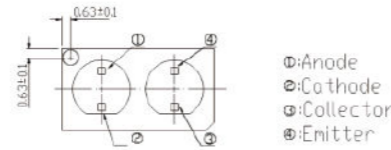


Part No.	Package	Input (Emitter)	Output (Detector)	Tr / Tf (μs)
PA-ITRLR9909	DIP	100 mW	50 mA	15 / 15

ITRLR9908 Dimension 10.65*5.65*9.4 mm



Specifications

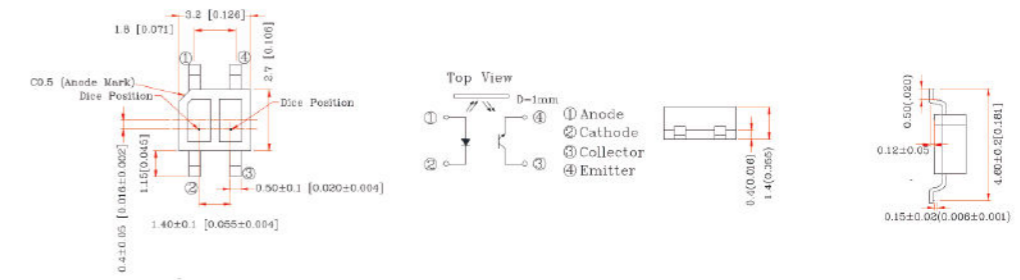


Part No.	Package	Input (Emitter)	Output (Detector)	Tr / Tf (μs)
PA-ITRLR9908	DIP	75 mW	75 mW	15 / 15

ITR8307 Dimension 3.2*2.7*1.4 mm

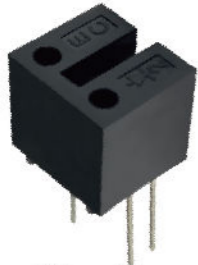


Specifications

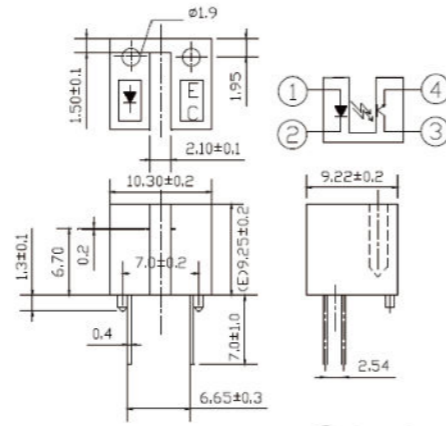
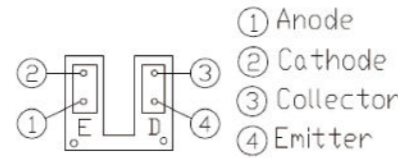


Part No.	Package	Input (Emitter)	Output (Detector)	Tr / Tf (μs)
ITR8307	PLCC	75 mW	75 mA	20 / 20

ITRLT8010 Dimension 13.0*6.0*20.0 mm

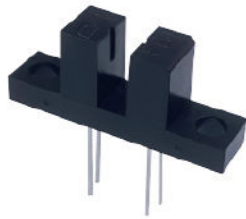


Specifications

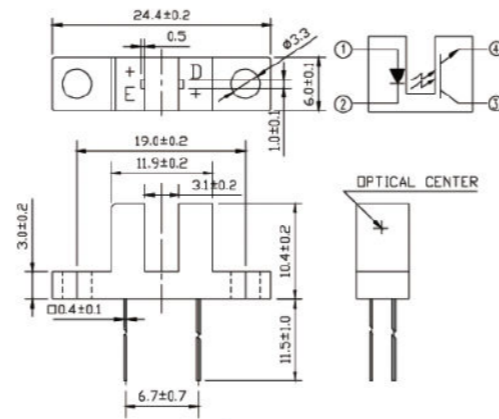
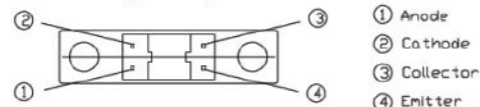


Part No.	Package	Input (Emitter)	Output (Detector)	Tr / Tf (μs)
PA-ITRLT8010	DIP	75 mW	20 mW	15 / 15

ITRLT8102 Dimension 24.4*6.0*21.9 mm



Specifications

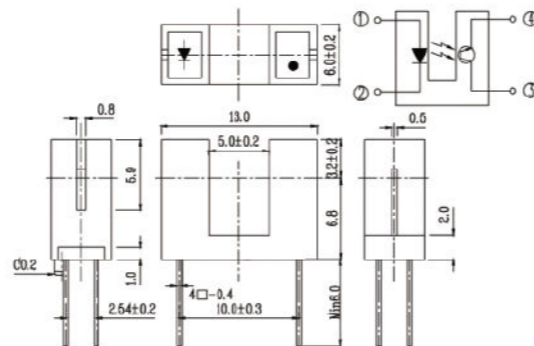
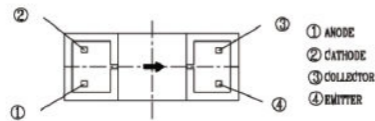


Part No.	Package	Input (Emitter)	Output (Detector)	Tr / Tf (μs)
PA-ITRLT8102	DIP	75 mW	30 mW	15 / 15

ITRLT9608 Dimension 13.0*6.0*12.8 mm



Specifications

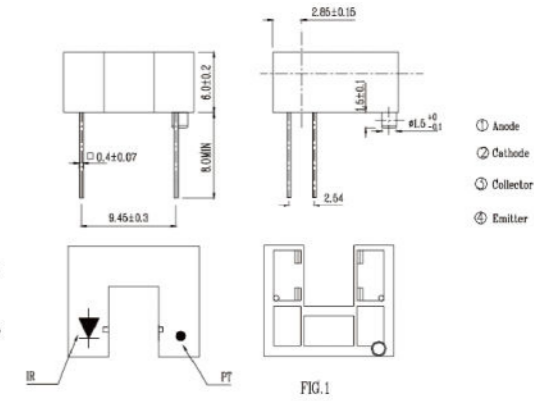
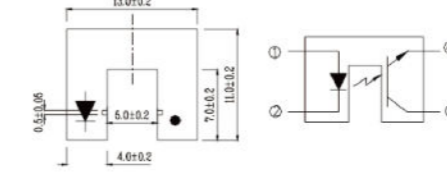


Part No.	Package	Input (Emitter)	Output (Detector)	Tr / Tf (μs)
PA-ITRLT9608	DIP	75 mW	20 mW	15 / 15

ITRLT9702 Dimension 13.0*11.0*14.0 mm



Specifications

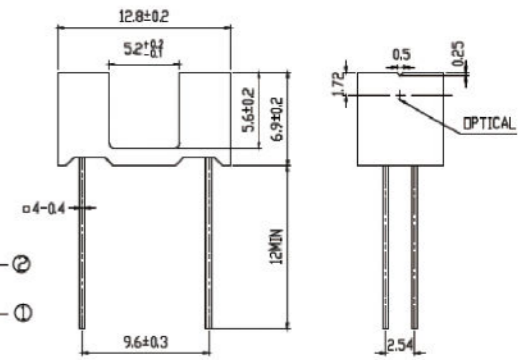
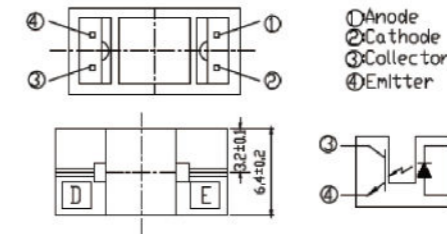


Part No.	Package	Input (Emitter)	Output (Detector)	Tr / Tf (μs)
PA-ITRLT9702	DIP	75 mW	20 mA	15 / 15

ITRLT9707 Dimension 12.8*6.4*18.9 mm



Specifications

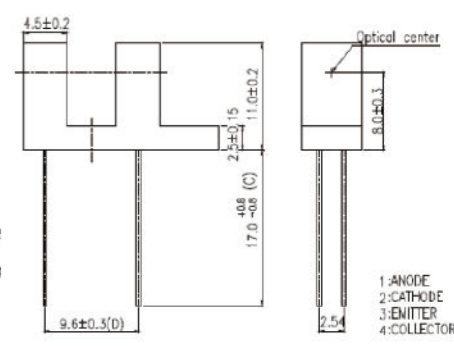
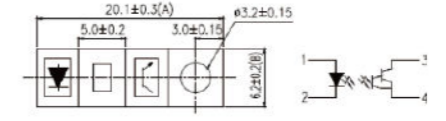


Part No.	Package	Input (Emitter)	Output (Detector)	Tr / Tf (μs)
PA-ITRLT9707	DIP	75 mW	20 mA	15 / 15

ITRLT9813 Dimension 20.1*6.2*28.0 mm

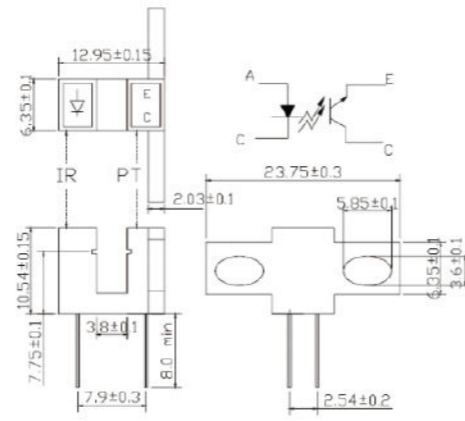
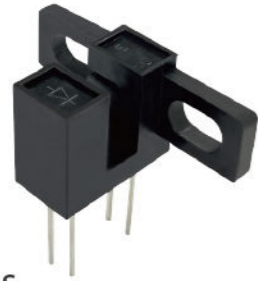


Specifications



Part No.	Package	Input (Emitter)	Output (Detector)	Tr / Tf (μs)
PA-ITRLT9813	DIP	75 mW	20 mW	15 / 15

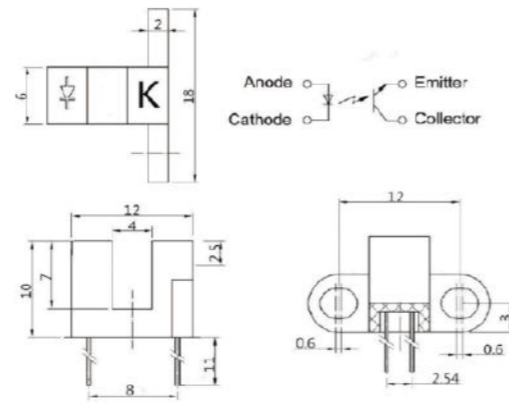
ITRLT20005 Dimension 23.75*12.95*18.29 mm



Specifications

Part No.	Package	Input (Emitter)	Output (Detector)	Tr / Tf (μs)
PA-ITRLT20005	DIP	75 mW	20 mW	15 / 15

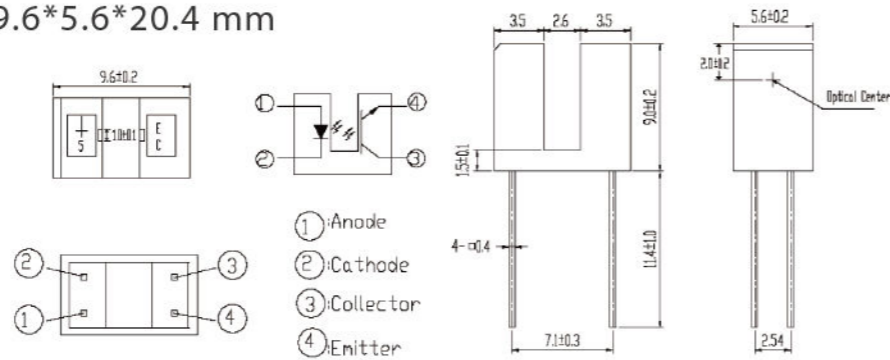
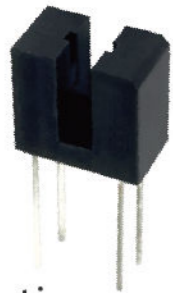
ITRLT152 Dimension 18.1*6.0*21.5 mm



Specifications

Part No.	Package	Input (Emitter)	Output (Detector)	Tr / Tf (μs)
PA-ITRLT152	DIP	75 mW	20 mA	15 / 15

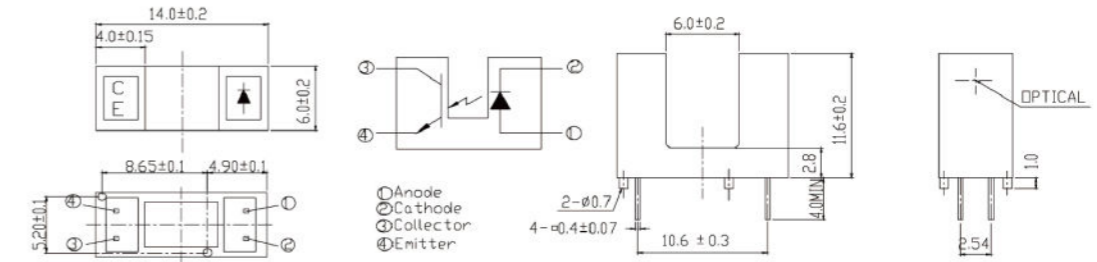
ITRLT8105 Dimension 9.6*5.6*20.4 mm



Specifications

Part No.	Package	Input (Emitter)	Output (Detector)	Tr / Tf (μs)
PA-ITRLT8105	DIP	75 mW	20 mA	15 / 15

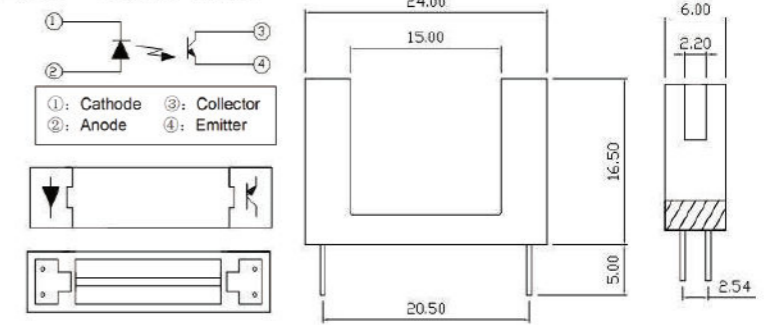
ITRLT8402 Dimension 14.0*6.0*15.6 mm



Specifications

Part No.	Package	Input (Emitter)	Output (Detector)	Tr / Tf (μs)
PA-ITRLT8402	DIP	75 mW	20 mW	15 / 15

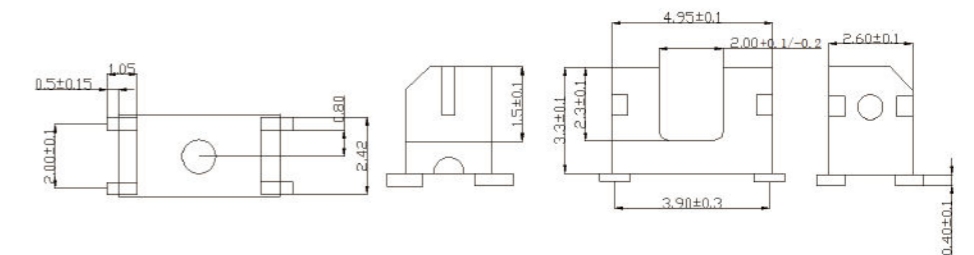
ITRLT1150 Dimension 23.75*12.95*18.29 mm



Specifications

Part No.	Package	Input (Emitter)	Output (Detector)	Tr / Tf (μs)
PA-ITRLT1150	DIP	75 mW	75 mW	15 / 15

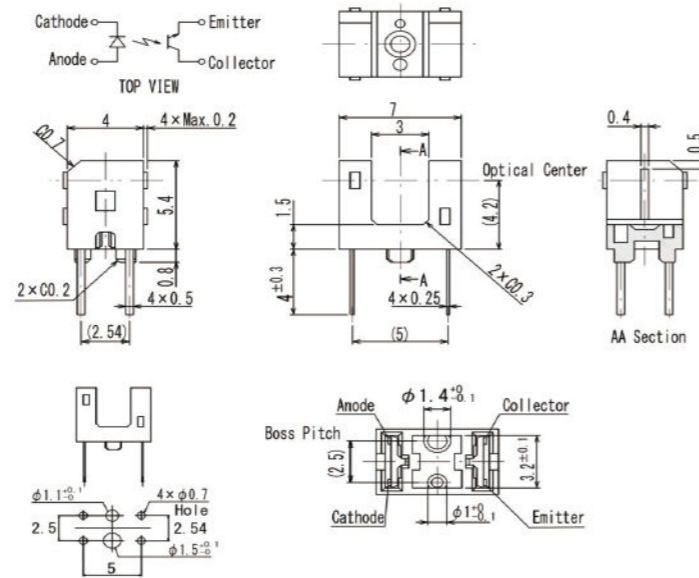
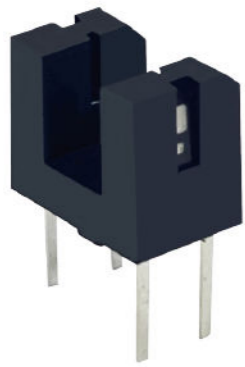
ITRLT0502 Dimension 4.95*2.6*3.3 mm



Specifications

Part No.	Package	Input (Emitter)	Output (Detector)	Tr / Tf (μs)
PA-ITRLT0502	DIP	75 mW	20 mW	15 / 15

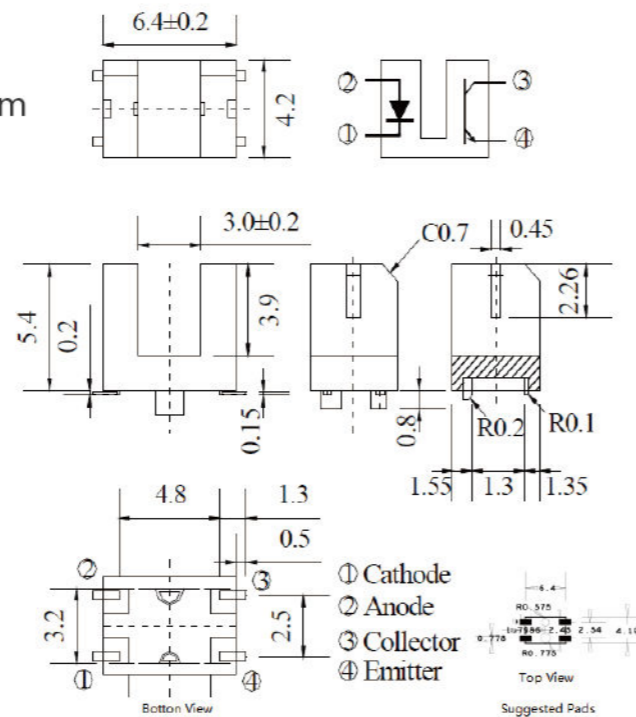
ITRLT7054 Dimension 7.0*4.0*9.4 mm



Specifications

Part No.	Package	Input (Emitter)	Output (Detector)	Tr / Tf (μs)
PA-ITRLT7054	DIP	75 mW	20 mA	15 / 15

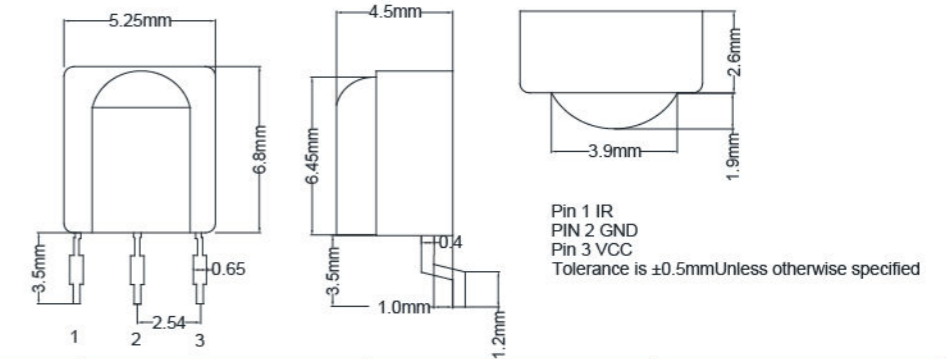
ITRLT2423 Dimension 6.4*4.2*6.2 mm



Specifications

Part No.	Package	Input (Emitter)	Output (Detector)	Tr / Tf (μs)
PA-ITRLT2423	DIP	75 mW	20 mA	15 / 15

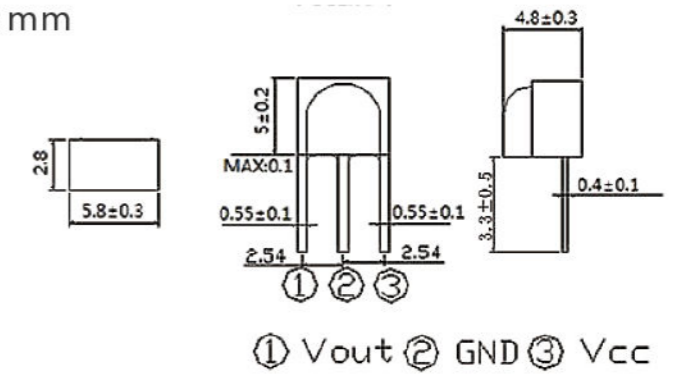
IRM828 Dimension 5.25*6.8*4.5 mm



Specifications

Part No.	Package	Vcc (V)	Fo (KHz)	λP (nm)
PL-IRM828-S69	Tapping	2.7 - 5.5	37.9	940

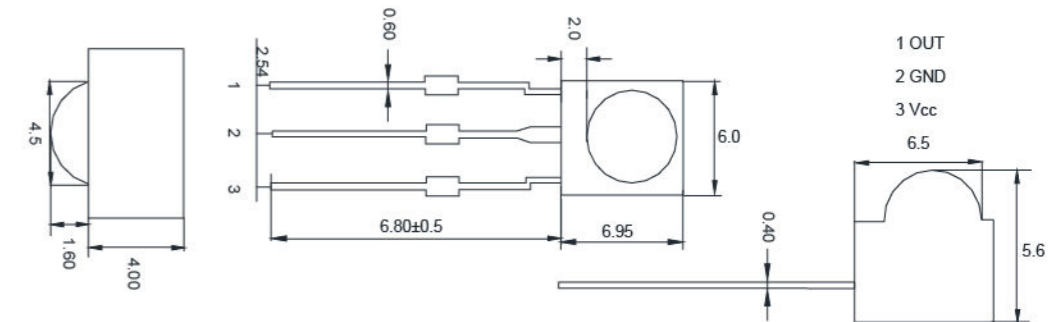
IRM546 Dimension 5.8*5.0*4.8 mm



Specifications

Part No.	Package	Vcc (V)	Fo (KHz)	λP (nm)
PL-IRM546JF41-S20	Tapping	2.7 - 5.5	37.9	940

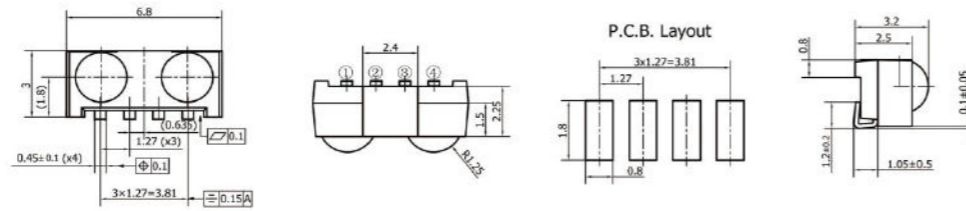
IRM1808001 Dimension 6.0*6.95*5.6 mm



Specifications

Part No.	Package	Vcc (V)	Fo (KHz)	λP (nm)
PL-IRM1808001	Tapping	2.7 - 5.5	38	940

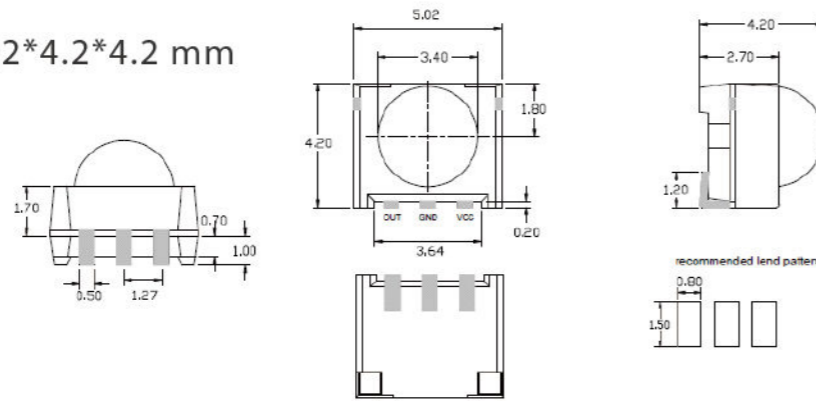
IRM2202001 Dimension 6.8*3.2*3.0 mm



Specifications

Part No.	Package	Vcc (V)	Fo (KHz)	λP (nm)
PL-IRM2202001	SMD	2.7 - 5.5	37.9	940

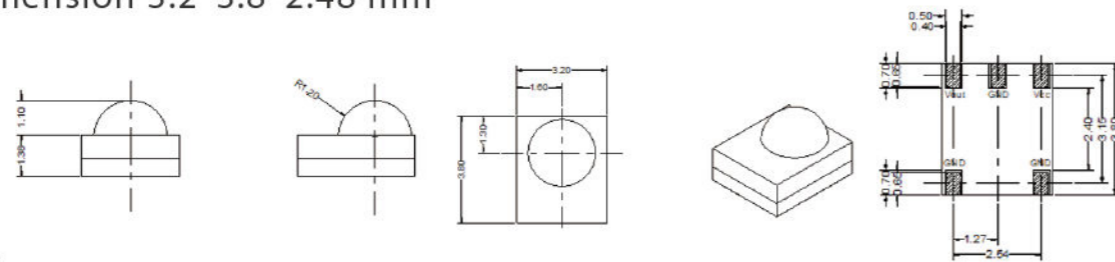
IRM1911 Dimension 5.02*4.2*4.2 mm



Specifications

Part No.	Package	Vcc (V)	Fo (KHz)	λP (nm)
PL-IRM1911001	SMD	2.7 - 5.5	38	940
PL-IRM1911002				

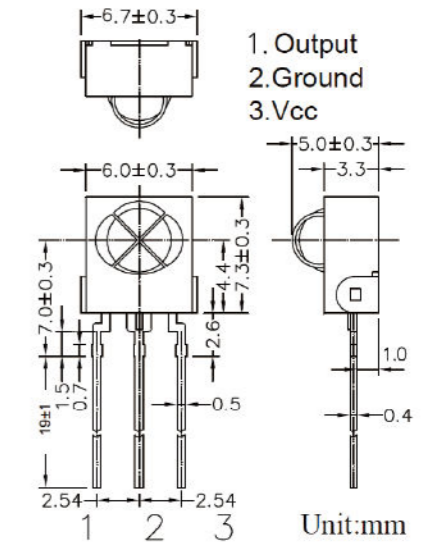
IRM3743 Dimension 3.2*3.8*2.48 mm



Specifications

Part No.	Package	Vcc (V)	Fo (KHz)	λP (nm)
PS-IRM3743-06K	SMD	2.7 - 5.5	37.9	940

IRM1838B Dimension 6.7*7.3*5.0 mm



Specifications

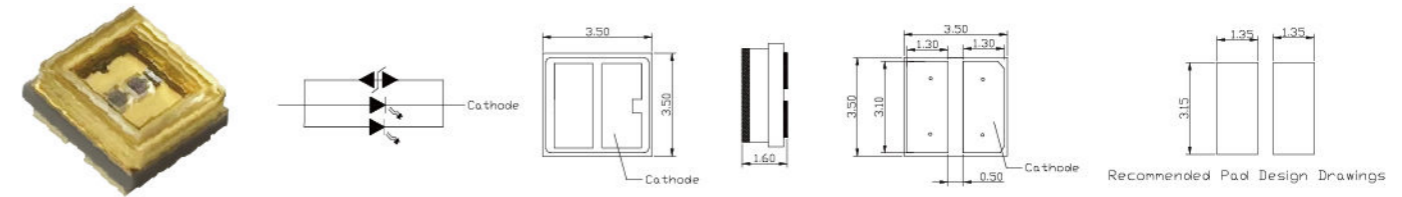
Part No.	Package	Vcc (V)	Fo (KHz)	λP (nm)
PL-IRM1838B	Tapping	2.7 - 5.5	37.9	-

UV LED Applications

- ◆ Ultraviolet disinfection
- ◆ Phototherapy
- ◆ Bio- Analysis / Detection
- ◆ General use



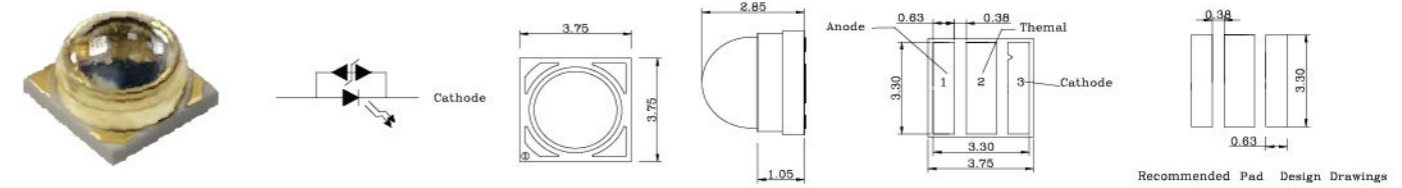
KPCA1 Dimension 3.5*3.5*1.6 mm



Specifications

Part No.	Package	test condition (IF)	Radiant Intensity(mW)	Wavelength(nm)	Viewing Angle(°)
LT3535UVC-KPCA1	SMD	150 mA	18.4 mW	275 nm	120

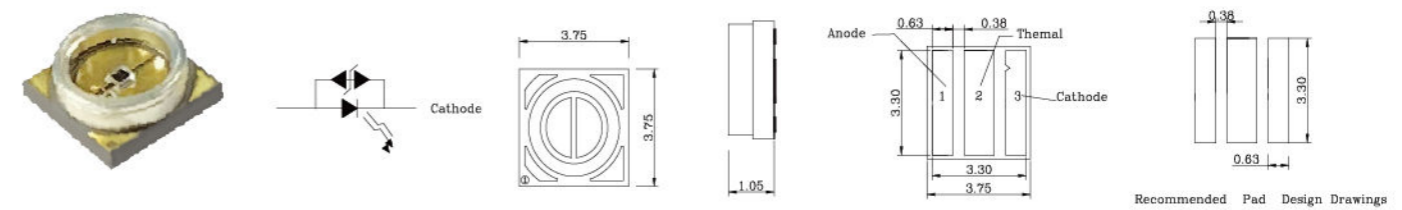
KCCM Dimension 3.5*3.5*1.6 mm



Specifications

Part No.	Package	test condition (IF)	Radiant Intensity(mW)	Wavelength(nm)	Viewing Angle(°)
LT3535UVC-KCCM	SMD	100 mA	20 mW	275 nm	60

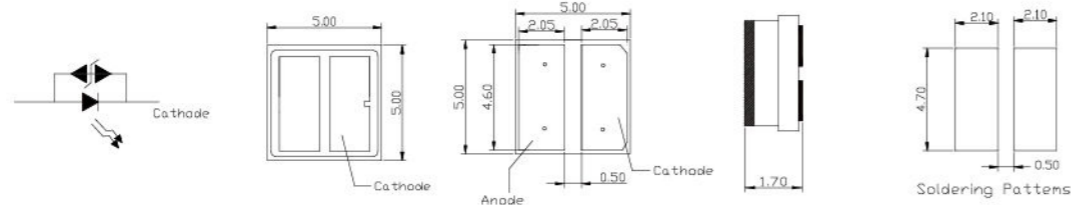
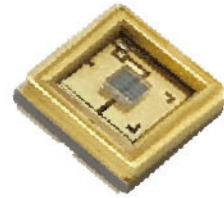
KPCM Dimension 3.5*3.5*1.6 mm



Specifications

Part No.	Package	test condition (IF)	Radiant Intensity(mW)	Wavelength(nm)	Viewing Angle(°)
LT3535UVC-KPCM	SMD	100 mA	15 mW	275 nm	120

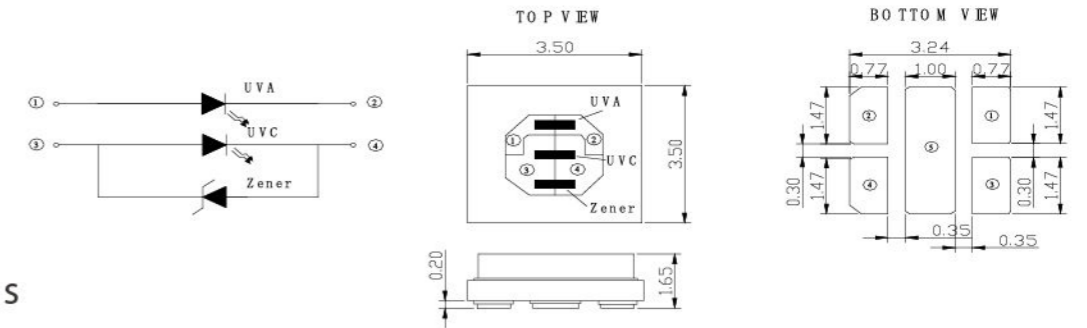
XPC Dimension 5.0*5.0*1.7 mm



Specifications

Part No.	Package	test condition (IF)	Radiant Intensity(mW)	Wavelength(nm)	Viewing Angle(°)
LT5050UVC-XPC	SMD	350 mA	28 mW	275 nm	120

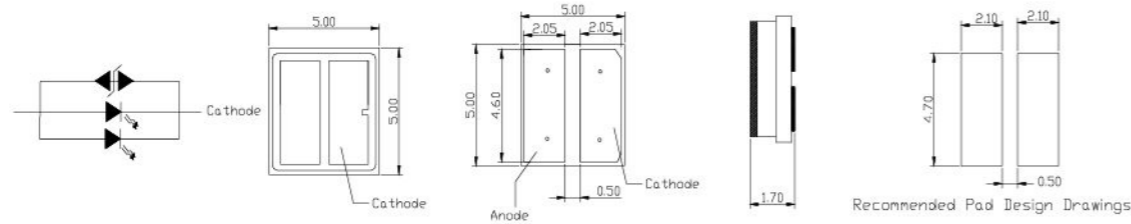
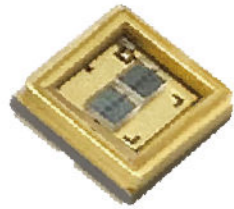
K1PCG Dimension 3.5*3.5*1.65 mm



Specifications

Part No.	Package	test condition (IF)	Radiant Intensity(mW)	Wavelength(nm)	Viewing Angle(°)
LT3535UVCA-K1PCG	SMD	40 mA / 150 mA	4.0 mW / 120 mW	280 nm / 410 nm	120

XPCA1 Dimension 5.0*5.0*1.7 mm



Specifications

Part No.	Package	test condition (IF)	Radiant Intensity(mW)	Wavelength(nm)	Viewing Angle(°)
LT5050UVC-XPCA1	SMD	600 mA	80 mW	275 nm	120